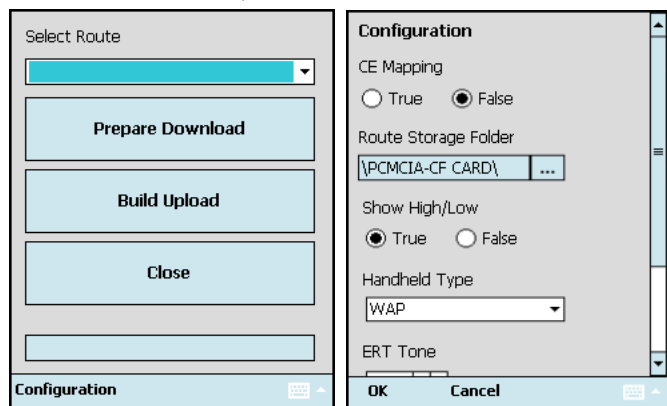


*The SDI philosophy of software product development began in the 1970's based on a simple principal of, "Choose one thing to do and do it well." The SDI suite of tools fulfills the promise of that principal. Coupled with solid product offerings, SDI provides, what is often called their best asset, excellence in customer service.*



After a massive development effort, Significant Digits delivered the first SDReader system in 1993. It was the first Microsoft Windows based route management application offered to the meter reading industry and that first customer remains a customer to this day. Thus, SDI started a tradition of excellence in software engineering, embedded systems development and customer service that the SDReader6 product suite is destined to carry on. Through the integration of WEB based features, satellite GPS technologies, seamless product tool integration and feature rich software development tools, the SDReader6 product suite has leaped far ahead of their competition once again. In a single summation, SDI strives to be the premiere software engineering services provider to their market through a relentless commitment to total customer satisfaction. SDI takes great pride in their ability to provide the highest quality products for the lowest possible price. Their products are on the forefront of the fast moving wave of technology. Moreover, SDI is constantly developing and re-engineering ways to better serve their customers by utilizing the latest trends in technology, software development and finding unseen ways to improve the industry.

## SDReader6

**SDRouteManagerCE is the state of the art, industry leading, software tool that meets the ever evolving meter reading and route management system requirements.**

**Developed in the Microsoft .Net framework, SDRouteManagerCE provides a simple, user friendly tool with these features:**

- Takes away the middle man of PC route management.
- An extremely easy to use graphical user interface
- A very streamlined approach to preparing a route to be read and preparing an upload file to go back to the billing system.
- A minimum of 2 clicks is all it takes to prepare a download from the billing system or to build an upload file to go to the billing system.
- Supplies simple configuration options that maximize the flexibility of the tool with diverse equipment integration.
- Is enormously flexible in loading large and small routes and one or many routes all while protecting data integrity through the complete cycle.
- Has the ability to load pre-made route maps with coordinates supplied by the billing system
- The number of dials for AMR reading can be set for the download build
- A multiplier can be set for the upload build
- Configuration settings are user programmable and not simply hard coded into the application
- Interfaces with any utility billing by mimicking competitor tools and providing custom developed interfaces.
- Provides four alternatives for managing GPS coordinates
- Avoids Data Redundancy.
- The design standards are modeled after the strategic vision and objectives of the IEEE FP-02 Mission Goals.

SDReader6, SDMobile and SDReaderCE meet the Open System Foundation Goals for compatibility. This allows the data to be rapidly imported into a number of host packages such as databases and spread sheets for additional management reporting.